

# Comfort Ascent Cushion Order Form

HCPCS CODING: E2603/E2604  
SKIN PROTECTION SEAT CUSHION

# permobil

SEATING + POSITIONING



Ascent

Company Name/ACCT #: \_\_\_\_\_

P.O. Number: \_\_\_\_\_

Requested By: \_\_\_\_\_

Phone: \_\_\_\_\_ Fax: \_\_\_\_\_

Email: \_\_\_\_\_

Ship To: \_\_\_\_\_

Client Reference: \_\_\_\_\_

For best results, do not fill out in your browser. Interactive form should be completed using Adobe Reader after saving to your local drive. Then email or print and fax to Customer Support at orders.comfort@permobil.com or 1.406.522.8563.

\*DO NOT SEND PROTECTED HEALTH INFORMATION. IT IS NOT NEEDED TO MAKE THE PRODUCT YOU ARE REQUESTING.\*

Please select size in the appropriate fabric chart below.

## 1 SIZE & COVER

 **COMFORT-TEK®**  
FOR FLUID PROTECTION &  
AN EASILY CLEANED SURFACE.

OR

 **STRETCH-AIR®**  
FOR COMFORT  
& HEAT DISSIPATION.

COMFORT-TEK											
		\$253.00				\$379.00		\$316.00		\$473.00	
DEPTH	20"	AC-GF-1620	AC-GF-1720	AC-GF-1820	AC-GF-1920	AC-GF-2020	AC-GF-2120	AC-GF-2220	AC-GF-2320	AC-GF-2420	
	19"	AC-GF-1619	AC-GF-1719	AC-GF-1819	AC-GF-1919	AC-GF-2019	AC-GF-2119	AC-GF-2219	AC-GF-2319	AC-GF-2419	
	18"	AC-GF-1618	AC-GF-1718	AC-GF-1818	AC-GF-1918	AC-GF-2018	AC-GF-2118	AC-GF-2218	AC-GF-2318	AC-GF-2418	
	17"	AC-GF-1617	AC-GF-1717	AC-GF-1817	AC-GF-1917	AC-GF-2017	AC-GF-2117	AC-GF-2217	AC-GF-2317	AC-GF-2417	
	16"	AC-GF-1616	AC-GF-1716	AC-GF-1816	AC-GF-1916	AC-GF-2016	AC-GF-2116	AC-GF-2216	AC-GF-2316	AC-GF-2416	
		16"	17"	18"	19"	20"	21"	22"	23"	24"	
		WIDTH									

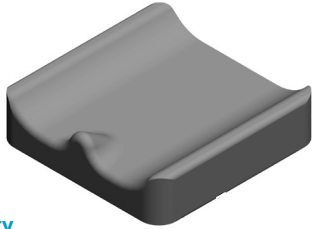
STRETCH-AIR											
		\$253.00				\$379.00		\$316.00		\$473.00	
DEPTH	20"	AC-GS-1620	AC-GS-1720	AC-GS-1820	AC-GS-1920	AC-GS-2020	AC-GS-2120	AC-GS-2220	AC-GS-2320	AC-GS-2420	
	19"	AC-GS-1619	AC-GS-1719	AC-GS-1819	AC-GS-1919	AC-GS-2019	AC-GS-2119	AC-GS-2219	AC-GS-2319	AC-GS-2419	
	18"	AC-GS-1618	AC-GS-1718	AC-GS-1818	AC-GS-1918	AC-GS-2018	AC-GS-2118	AC-GS-2218	AC-GS-2318	AC-GS-2418	
	17"	AC-GS-1617	AC-GS-1717	AC-GS-1817	AC-GS-1917	AC-GS-2017	AC-GS-2117	AC-GS-2217	AC-GS-2317	AC-GS-2417	
	16"	AC-GS-1616	AC-GS-1716	AC-GS-1816	AC-GS-1916	AC-GS-2016	AC-GS-2116	AC-GS-2216	AC-GS-2316	AC-GS-2416	
		16"	17"	18"	19"	20"	21"	22"	23"	24"	
		WIDTH									

ASCENT-ORDER REV120320

# 2 ASCENT ACCESSORIES

## 2.1 INCONTINENCE LINER MSRP \$60.00 Each

Liner provides extra incontinence protection for the cushion.

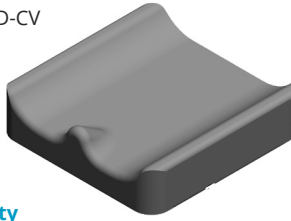


Quantity

Incontinence Liner (BINC-AC\_W\_D)

## 2.2 EXTRA COVER MSRP \$90.00 each

AC\_W\_D-CV

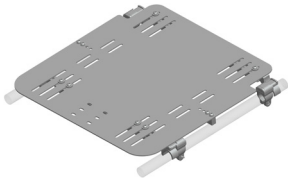


Quantity

	STRETCH-AIR (STRETCH-AIR)
	COMFORT-TEK (COMFORT-TEK)

## 2.3 REMOVABLE SOLID SEAT PAN & HARDWARE KIT HCPCS Code: E2231 MSRP \$387.00

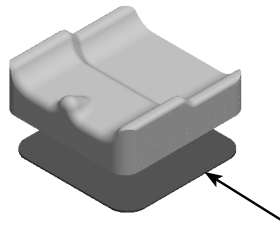
The solid seat pan kit includes a slotted aluminum pan and attaching hardware to accommodate 7/8" or 1" tubing. The kit also comes with two different cross bars to accommodate various wheelchair frame types. This will fit both folding and non-folding seat rails. Lateral thigh support hardware can be easily attached.



Solid Seat Pan & Hardware Kit  
(RSSP-1-\_\_)

## 2.4 RIGID INSERT HCPCS Code: E0992 MSRP \$65.00

3/16" Plastic rigidizing board.



	Rigid Insert Glued (RID_)
	Rigid Insert Not Glued (RID_)

# 3 BODILINK® LATERAL PELVIC/THIGH SUPPORT HARDWARE & PADS

Please select sizes in the appropriate fabric & style charts below. Contact Customer Support for custom sizes that are not listed below 800.736.0925.

## 3.1 PREMIUM PAD SIZE & SHAPE HCPCS Code: E0953 MSRP \$62.00

- You may make one selection per column (Left, Extra Left, Right, and Extra Right) in section 3.1.
- Make a fabric selection in 3.2.

\*Length (L) refers to the actual size dimension of the support from top to bottom edge. Depth (D) refers to the actual size dimension from anterior to posterior edge.

STYLE	SIZE	LEFT	EXTRA LEFT	RIGHT	EXTRA RIGHT
	3.5"L x 4"D	BL-LPTSP2Z-3L4D-LH	BL-LPTSP2Z-3L4D-LH	BL-LPTSP2Z-3L4D-RH	BL-LPTSP2Z-3L4D-RH
	3.5"L x 8"D	BL-LPTSP2Z-3L8D-LH	BL-LPTSP2Z-3L8D-LH	BL-LPTSP2Z-3L8D-RH	BL-LPTSP2Z-3L8D-RH
	3.5"L x 12"D	BL-LPTSP2Z-3L12D-LH	BL-LPTSP2Z-3L12D-LH	BL-LPTSP2Z-3L12D-RH	BL-LPTSP2Z-3L12D-RH
	5.5"L x 6"D	BL-LPTSP2Z-5L6D-LH	BL-LPTSP2Z-5L6D-LH	BL-LPTSP2Z-5L6D-RH	BL-LPTSP2Z-5L6D-RH

# 3.2

## PREMIUM PAD COVER WITH FOAM INSERT

COVER OPTIONS	MSRP	LEFT	EXTRA LEFT	RIGHT	EXTRA RIGHT
COMFORT-TEK	\$0.00/ea.	LPTS-P2-COMFORT-FM	LPTS-P2-COMFORT-FM	LPTS-P2-COMFORT-FM	LPTS-P2-COMFORT-FM
STRETCH-AIR	\$0.00/ea.	LPTS-P2-STRETCH-FM	LPTS-P2-STRETCH-FM	LPTS-P2-STRETCH-FM	LPTS-P2-STRETCH-FM
GLIDEWEAR™	\$13.00/ea.	LPTS-P2-GLIDE-FM	LPTS-P2-GLIDE-FM	LPTS-P2-GLIDE-FM	LPTS-P2-GLIDE-FM

**COMFORT-TEK**  
FOR FLUID PROTECTION & AN EASILY CLEANED SURFACE.

**STRETCH-AIR**  
FOR COMFORT & HEAT DISSIPATION.

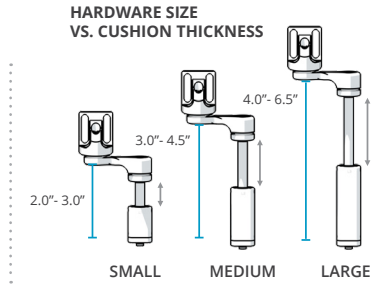
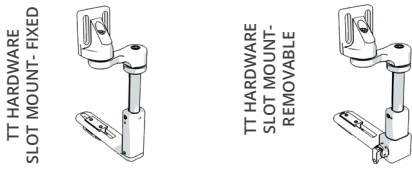
**GLIDEWEAR™**  
FOR SKIN PROTECTION & SHEAR REDUCTION. NOT FLUID RESISTANT.

# 3.3

## BODILINK® LATERAL PELVIC/THIGH SUPPORT HARDWARE

• You may make one selection per column (Left, Extra Left, Right, and Extra Right) in section 3.3 from group A, B, -OR- C.  
• TT long extension arms (section 3.4) will only work with TT style hardware.

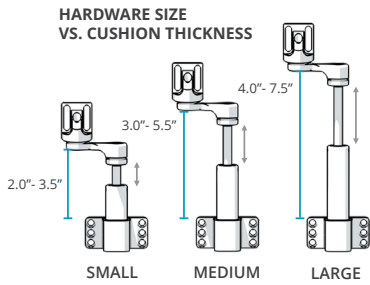
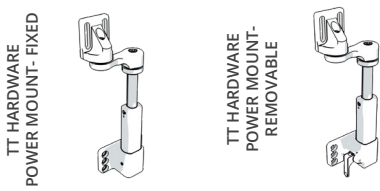
### A. TT HARDWARE, SLOT MOUNT



HARDWARE SIZE	MAX CUSHION THICKNESS CLEARANCE	RECOMMENDED CUSHION THICKNESS
SMALL	3.0"	2.0" - 3.0"
MEDIUM	4.5"	3.0" - 4.5"
LARGE	6.5"	4.0" - 6.5"

	SIZE	MSRP	LEFT	EXTRA LEFT	RIGHT	EXTRA RIGHT
<b>FIXED</b>	SMALL	\$141.00	BL-LPTS-TT1FXSL1-LH	BL-LPTS-TT1FXSL1-LH	BL-LPTS-TT1FXSL1-RH	BL-LPTS-TT1FXSL1-RH
	MEDIUM	\$141.00	BL-LPTS-TT1FXSL2-LH	BL-LPTS-TT1FXSL2-LH	BL-LPTS-TT1FXSL2-RH	BL-LPTS-TT1FXSL2-RH
	LARGE	\$141.00	BL-LPTS-TT1FXSL3-LH	BL-LPTS-TT1FXSL3-LH	BL-LPTS-TT1FXSL3-RH	BL-LPTS-TT1FXSL3-RH
<b>REMOVABLE E1028</b>	SMALL	\$248.00	BL-LPTS-TT1RMSL1-LH	BL-LPTS-TT1RMSL1-LH	BL-LPTS-TT1RMSL1-RH	BL-LPTS-TT1RMSL1-RH
	MEDIUM	\$248.00	BL-LPTS-TT1RMSL2-LH	BL-LPTS-TT1RMSL2-LH	BL-LPTS-TT1RMSL2-RH	BL-LPTS-TT1RMSL2-RH
	LARGE	\$248.00	BL-LPTS-TT1RMSL3-LH	BL-LPTS-TT1RMSL3-LH	BL-LPTS-TT1RMSL3-RH	BL-LPTS-TT1RMSL3-RH

### B. TT HARDWARE, POWER MOUNT



HARDWARE SIZE	MAX CUSHION THICKNESS CLEARANCE	RECOMMENDED CUSHION THICKNESS
SMALL	3.5"	2.0" - 3.5"
MEDIUM	5.5"	3.0" - 5.5"
LARGE	7.5"	4.0" - 7.5"

	SIZE	MSRP	LEFT	EXTRA LEFT	RIGHT	EXTRA RIGHT
<b>FIXED</b>	SMALL	\$185.00	BL-LPTS-TT1FXPWL1-LH	BL-LPTS-TT1FXPWL1-LH	BL-LPTS-TT1FXPWL1-RH	BL-LPTS-TT1FXPWL1-RH
	MEDIUM	\$185.00	BL-LPTS-TT1FXPWL2-LH	BL-LPTS-TT1FXPWL2-LH	BL-LPTS-TT1FXPWL2-RH	BL-LPTS-TT1FXPWL2-RH
	LARGE	\$185.00	BL-LPTS-TT1FXPWL3-LH	BL-LPTS-TT1FXPWL3-LH	BL-LPTS-TT1FXPWL3-RH	BL-LPTS-TT1FXPWL3-RH
<b>REMOVABLE E1028</b>	SMALL	\$285.00	BL-LPTS-TT1RMPWL1-LH	BL-LPTS-TT1RMPWL1-LH	BL-LPTS-TT1RMPWL1-RH	BL-LPTS-TT1RMPWL1-RH
	MEDIUM	\$285.00	BL-LPTS-TT1RMPWL2-LH	BL-LPTS-TT1RMPWL2-LH	BL-LPTS-TT1RMPWL2-RH	BL-LPTS-TT1RMPWL2-RH
	LARGE	\$285.00	BL-LPTS-TT1RMPWL3-LH	BL-LPTS-TT1RMPWL3-LH	BL-LPTS-TT1RMPWL3-RH	BL-LPTS-TT1RMPWL3-RH

## TT HARDWARE, POWER MOUNT OPTION

**NOTE:** If choosing the Power Mount Hardware, choose the appropriate power mount type below.

POWER MOUNT	MSRP	PART NUMBER
QUANTUM	add \$0.00	LPTS-TT1-PW1
PERMOBIL	add \$0.00	LPTS-TT1-PW2
QUICKIE	add \$0.00	LPTS-TT1-PW3
ROVI	add \$0.00	LPTS-TT1-PW4
AVID REHAB	add \$0.00	LPTS-TT1-PW5

## 3.4 TT LONG EXTENSION ARM 4" MSRP \$37.00/arm



LEFT	EXTRA LEFT	RIGHT	EXTRA RIGHT
BL-LPTS-TT1LARM4	BL-LPTS-TT1LARM4	BL-LPTS-TT1LARM4	BL-LPTS-TT1LARM4

# 4 BODILINK® MEDIAL KNEE/THIGH SUPPORT HARDWARE & PADS

## 4.1 PAD SIZE & SHAPE

HCPCS CODING: E0957 MSRP \$130.00

STYLE	SIZE	PART NUMBER
 <b>WEDGE</b>	2.5"W x 3.5"D	BL-MKTSP1-3W4D
	3.5"W x 5"D	BL-MKTSP1-4W5D
	4"W x 6"D	BL-MKTSP1-4W6D
 <b>OVAL</b>	2.5"W x 3.5"D	BL-MKTSP2-3W4D
	3.5"W x 5"D	BL-MKTSP2-4W5D
	5"W x 6"D	BL-MKTSP2-5W6D

- You may make one selection per column.
- Choose between wedge or oval in 4.1.
- Choose a cover material in 4.2.
- Choose hardware size in 4.3.

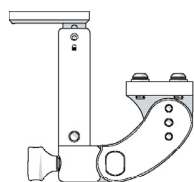
## 4.2 PAD COVER MATERIAL

 <small>PROLONGING SKIN PROTECTION</small>	FOR SKIN PROTECTION & SHEAR REDUCTION. NOT FLUID RESISTANT.
 	FOR FLUID PROTECTION & AN EASILY CLEANED SURFACE.
 	FOR PATIENT COMFORT & HEAT DISSIPATION.

GlideWear (MKTSP-GLIDE) (add \$15.00)
COMFORT-TEK (MKTSP-COMFORT)
STRETCH-AIR (MKTSP-STRETCH)

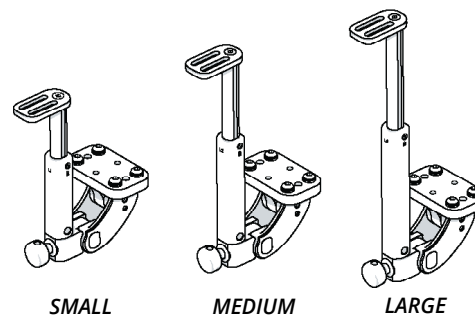
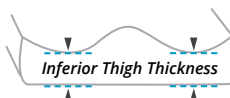
## 4.3 MEDIAL KNEE/THIGH SUPPORT SWING AWAY HARDWARE

HCPCS CODING: E1028 MSRP \$180.00



SIZE	PART NUMBER
SMALL	BL-MKTS-ST1SASL1
MEDIUM	BL-MKTS-ST1SASL2
LARGE	BL-MKTS-ST1SASL3

- \*Swing Away Hardware only, not available in Fixed Hardware
- \*\*MKTS Hardware must be mounted to Removable Solid Seat Pan in section 2.4
- \*\*\*If Leg Length Discrepancy is needed on Removable Solid Seat Pan, Offset Orientation must be selected



SIZE	RECOMMENDED INFERIOR THIGH THICKNESS
Small	1.00" - 3.00"
Medium	2.00" - 5.00"
Large	3.00" - 7.00"

The following are trademarks and registered trademarks of Permobil Seating and Positioning: COMFORT-TEK® and STRETCH-AIR®. GlideWear™ is a trademark of MIPS.