

Titanium adjustable wheelchairs

# TiLite TRA | TiLite ZRA



permobil

## TiLite TRA

Our most advanced titanium adjustable chair, the TRA's dual-tube frame minimises weight while maximising performance.

The geometry of its titanium frame stiffens the wheelchair, transferring more of your push stroke directly to the ground resulting in greater stamina and a more effortless ride.



## TiLite ZRA

Distinguished by a clean, minimal look, the mono-tube frame's 1.25" tubing gives the ZRA strength and durability.

In a class of its own, the ZRA has a lightweight and fully adjustable titanium frame. The minimal design results in excellent transportability and easy placement on a car seat.



## Tattoo options

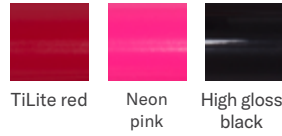
- 1 Mosaic
- 2 Flower garden
- 3 Need for speed



1 2 3

## Frame colours

### High gloss paint



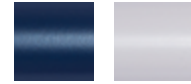
TiLite red Neon pink High gloss black

### Metallic paint



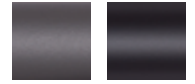
Tangerine metallic Acid green metallic Ocean blue metallic

### Pearlescent paint



Midnight blue pearl White pearl

### Matte paint



Titanium grey Black lava

### Candy paint



Ruby red Azure blue Electric plum

### Matte textured paint



Flame orange OD green Hyper blue

### Natural Titanium



Satin Polished (CMD 87)

## Component colours

### Anodised



Red Orange Blue Purple Green Gold Black

## Specifications

### TiLite TRA

<b>Frame features</b>	Titanium Dual-Tube Rigid, TiFit, Full adjustability
<b>Total chair width*</b>	23"
<b>Seat width</b>	12" – 20"
<b>Seat depth</b>	12" – 20"
<b>Front seat height</b>	15" – 21"
<b>Rear seat height</b>	13" – 21"
<b>Front frame angle</b>	70°, 75°, 80°, 85°, or 90°
<b>Camber</b>	0°, 2°, 4°, 6°, or 8°
<b>Centre of gravity adjustment</b>	5"

<b>Front seat width (seat taper)</b>	0", 1", 2"
<b>Folding seat back</b>	Adj. height 9.5" – 22" Adj. angle 80° – 101°
<b>Ergonomic seat</b>	6", 7", 8"
<b>Transit options</b>	Q-Straint lock down approved
<b>Transport weight*</b>	5 kg
<b>Weight limit</b>	120 kg Standard 159 kg Heavy duty
<b>Warranty</b>	Five years on frame One year on TiLite components

### TiLite ZRA

<b>Frame features</b>	Titanium Mono-Tube Rigid, TiFit, Full adjustability
<b>Total chair width*</b>	23"
<b>Seat width</b>	10" – 20"
<b>Seat depth</b>	10" – 20"
<b>Front seat height</b>	16" – 21"
<b>Rear seat height</b>	12.5" – 21"
<b>Front frame angle</b>	70°, 75°, 80°, 85°, or 90°
<b>Camber</b>	0°, 2°, 4°, 6°, or 8°
<b>Centre of gravity adjustment</b>	6"

<b>Front seat width (seat taper)</b>	0", 1.5"
<b>Folding seat back</b>	Adj. height 9.5" – 22" Adj. angle 80° – 101°
<b>Ergonomic seat</b>	6", 7", 8"
<b>Transit options</b>	Transit tie-down
<b>Transport weight*</b>	4.8 kg
<b>Weight limit</b>	120 kg Standard 136 kg Heavy duty
<b>Warranty</b>	Five years on frame One year on TiLite components

\* Weights and widths based on 16" x 16" chair with 0° camber, minimum rear wheel spacing and all standard features. Rear wheels are not included in transport weight. For reference, a pair of standard 24" rear wheels weighs 3.3 kg.