

Order form

Comfort Ascent cushion

HCPCS coding: E2603/E2604 / Skin protection seat cushion

Ascent



Company Name/ACCT #: _____

P.O. Number: _____

Requested By: _____

Phone: _____ Fax: _____

Email: _____

Ship To: _____

Client Reference: _____

For best results, do not fill out in your browser. Interactive form should be completed using Adobe Reader after saving to your local drive. Then email or print and fax to Customer Support at orders.comfort@permobil.com or 1.406.522.8563.

DO NOT SEND PROTECTED HEALTH INFORMATION. IT IS NOT NEEDED TO MAKE THE PRODUCT YOU ARE REQUESTING.

1 Size & cover

Please select size in the appropriate fabric chart below.


**COMFORT-TEK®**

For fluid protection &
an easily cleaned surface.

**STRETCH-AIR®**

For comfort
& heat dissipation.

| COMFORT-TEK | | | | | | | | | | | |
|-------------|-----|------------|------------|------------|------------|------------|------------|------------|------------|------------|--|
| | | | | \$298.00 | \$446.00 | | | | \$372.00 | \$557.00 | |
| Depth | 20" | AC-GF-1620 | AC-GF-1720 | AC-GF-1820 | AC-GF-1920 | AC-GF-2020 | AC-GF-2120 | AC-GF-2220 | AC-GF-2320 | AC-GF-2420 | |
| | 19" | AC-GF-1619 | AC-GF-1719 | AC-GF-1819 | AC-GF-1919 | AC-GF-2019 | AC-GF-2119 | AC-GF-2219 | AC-GF-2319 | AC-GF-2419 | |
| | 18" | AC-GF-1618 | AC-GF-1718 | AC-GF-1818 | AC-GF-1918 | AC-GF-2018 | AC-GF-2118 | AC-GF-2218 | AC-GF-2318 | AC-GF-2418 | |
| | 17" | AC-GF-1617 | AC-GF-1717 | AC-GF-1817 | AC-GF-1917 | AC-GF-2017 | AC-GF-2117 | AC-GF-2217 | AC-GF-2317 | AC-GF-2417 | |
| | 16" | AC-GF-1616 | AC-GF-1716 | AC-GF-1816 | AC-GF-1916 | AC-GF-2016 | AC-GF-2116 | AC-GF-2216 | AC-GF-2316 | AC-GF-2416 | |
| | | 16" | 17" | 18" | 19" | 20" | 21" | 22" | 23" | 24" | |
| Width | | | | | | | | | | | |

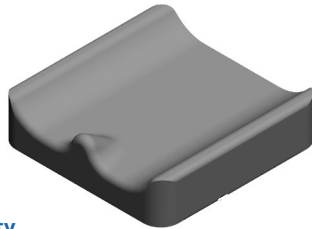
| <div></div> <div>STRETCH-AIR</div> | | | | | | | | | | | | | |
|---|-----|------------|------------|------------|------------|------------|------------|------------|------------|------------|----------|--|--|
| | | | | \$298.00 | | | \$446.00 | | | \$372.00 | \$557.00 | | |
| Depth | 20" | AC-GS-1620 | AC-GS-1720 | AC-GS-1820 | AC-GS-1920 | AC-GS-2020 | AC-GS-2120 | AC-GS-2220 | AC-GS-2320 | AC-GS-2420 | | | |
| | 19" | AC-GS-1619 | AC-GS-1719 | AC-GS-1819 | AC-GS-1919 | AC-GS-2019 | AC-GS-2119 | AC-GS-2219 | AC-GS-2319 | AC-GS-2419 | | | |
| | 18" | AC-GS-1618 | AC-GS-1718 | AC-GS-1818 | AC-GS-1918 | AC-GS-2018 | AC-GS-2118 | AC-GS-2218 | AC-GS-2318 | AC-GS-2418 | | | |
| | 17" | AC-GS-1617 | AC-GS-1717 | AC-GS-1817 | AC-GS-1917 | AC-GS-2017 | AC-GS-2117 | AC-GS-2217 | AC-GS-2317 | AC-GS-2417 | | | |
| | 16" | AC-GS-1616 | AC-GS-1716 | AC-GS-1816 | AC-GS-1916 | AC-GS-2016 | AC-GS-2116 | AC-GS-2216 | AC-GS-2316 | AC-GS-2416 | | | |
| | | 16" | 17" | 18" | 19" | 20" | 21" | 22" | 23" | 24" | | | |
| Width | | | | | | | | | | | | | |

2 Ascent accessories

2.1 Incontinence liner

MSRP \$71.00 Each

Liner provides extra incontinence protection for the cushion.



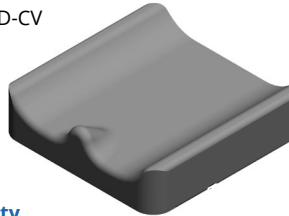
Quantity

Incontinence Liner (BINC-AC_W_D)

2.2 Extra cover

MSRP \$107.00 each

AC_W_D-CV



Quantity

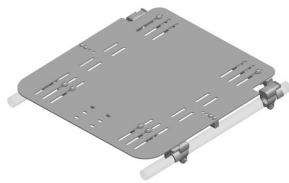
STRETCH-AIR
(STRETCH-AIR)

COMFORT-TEK
(COMFORT-TEK)

2.3 Removable solid seat pan & hardware kit

HPCPS Coding: E2231 MSRP \$440.00

The solid seat pan kit includes a slotted aluminum pan and attaching hardware to accommodate 7/8" or 1" tubing. The kit also comes with two different cross bars to accommodate various wheelchair frame types. This will fit both folding and non-folding seat rails. Lateral thigh support hardware can be easily attached.

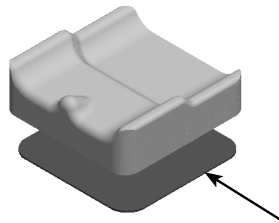


Solid Seat Pan & Hardware Kit
(RSSP-1-___)

2.4 Rigid insert

HPCPS Coding: E0992
MSRP \$78.00

3/16" Plastic rigidizing board.



Rigid Insert Glued
(RID_)

Rigid Insert Not Glued
(RID_)

3 BodiLink® Lateral Pelvic/Thigh support hardware & pads

Please select sizes in the appropriate fabric & style charts below. Contact Customer Support for custom sizes that are not listed below 800.736.0925.

3.1 Premium pad shape & size

HPCPS Coding: E0953 MSRP \$72.00

- You may make one selection per column (Left, Extra Left, Right, and Extra Right) in section 3.1.
- Make a fabric selection in 3.2.

*Length (L) refers to the actual size dimension of the support from top to bottom edge. Depth (D) refers to the actual size dimension from anterior to posterior edge.

| Style | Size | Left | Extra left | Right | Extra right |
|-------|--------------|---------------------|---------------------|---------------------|---------------------|
| | 3.5"L x 4"D | BL-LPTSP2Z-3L4D-LH | BL-LPTSP2Z-3L4D-LH | BL-LPTSP2Z-3L4D-RH | BL-LPTSP2Z-3L4D-RH |
| | 3.5"L x 8"D | BL-LPTSP2Z-3L8D-LH | BL-LPTSP2Z-3L8D-LH | BL-LPTSP2Z-3L8D-RH | BL-LPTSP2Z-3L8D-RH |
| | 3.5"L x 12"D | BL-LPTSP2Z-3L12D-LH | BL-LPTSP2Z-3L12D-LH | BL-LPTSP2Z-3L12D-RH | BL-LPTSP2Z-3L12D-RH |
| | 5.5"L x 6"D | BL-LPTSP2Z-5L6D-LH | BL-LPTSP2Z-5L6D-LH | BL-LPTSP2Z-5L6D-RH | BL-LPTSP2Z-5L6D-RH |

3.2 Premium pad cover with foam insert

| Cover options | MSRP | Left | | Extra left | | Right | | Extra right | |
|--------------------|-------------|------|--------------------|------------|--------------------|-------|--------------------|-------------|--------------------|
| COMFORT-TEK | \$0.00/ea. | | LPTS-P2-COMFORT-FM | | LPTS-P2-COMFORT-FM | | LPTS-P2-COMFORT-FM | | LPTS-P2-COMFORT-FM |
| STRETCH-AIR | \$0.00/ea. | | LPTS-P2-STRETCH-FM | | LPTS-P2-STRETCH-FM | | LPTS-P2-STRETCH-FM | | LPTS-P2-STRETCH-FM |
| GLIDEWEAR™ | \$15.00/ea. | | LPTS-P2-GLIDE-FM | | LPTS-P2-GLIDE-FM | | LPTS-P2-GLIDE-FM | | LPTS-P2-GLIDE-FM |



COMFORT-TEK
For fluid protection & an easily
cleaned surface.



STRETCH-AIR
For comfort & heat
dissipation.



For skin protection
& shear reduction.
Not fluid resitant.

3.3 BodiLink® Lateral Pelvic/Thigh Support hardware

- You may make one selection per column (Left, Extra Left, Right, and Extra Right) in section 3.3 from group A, B, -OR- C.
- TT long extension arms (section 3.4) will only work with TT style hardware.

A. TT hardware, slot mount

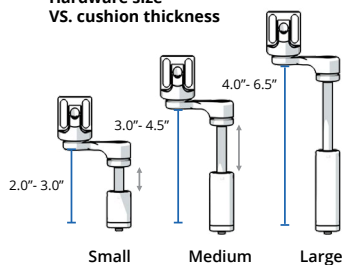
TT hardware slot
mount - Fixed



TT hardware
slot mount -
Removable



Hardware size
VS. cushion thickness

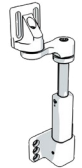


| Hardware size | Max cushion thickness clearance | Recommended cushion thickness |
|---------------|---------------------------------------|-------------------------------------|
| Small | 3.0" | 2.0"- 3.0" |
| Medium | 4.5" | 3.0"- 4.5" |
| Large | 6.5" | 4.0"- 6.5" |

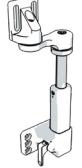
| | | Size | MSRP | Left | | Extra left | | Right | | Extra right | |
|--------------------|--------|----------|------|---------------------|--|---------------------|--|---------------------|--|---------------------|--|
| Fixed | Small | \$161.00 | | BL-LPTS-TT1FXSL1-LH | | BL-LPTS-TT1FXSL1-LH | | BL-LPTS-TT1FXSL1-RH | | BL-LPTS-TT1FXSL1-RH | |
| | Medium | \$161.00 | | BL-LPTS-TT1FXSL2-LH | | BL-LPTS-TT1FXSL2-LH | | BL-LPTS-TT1FXSL2-RH | | BL-LPTS-TT1FXSL2-RH | |
| | Large | \$161.00 | | BL-LPTS-TT1FXSL3-LH | | BL-LPTS-TT1FXSL3-LH | | BL-LPTS-TT1FXSL3-RH | | BL-LPTS-TT1FXSL3-RH | |
| Removable E1028 | Small | \$282.00 | | BL-LPTS-TT1RMSL1-LH | | BL-LPTS-TT1RMSL1-LH | | BL-LPTS-TT1RMSL1-RH | | BL-LPTS-TT1RMSL1-RH | |
| | Medium | \$282.00 | | BL-LPTS-TT1RMSL2-LH | | BL-LPTS-TT1RMSL2-LH | | BL-LPTS-TT1RMSL2-RH | | BL-LPTS-TT1RMSL2-RH | |
| | Large | \$282.00 | | BL-LPTS-TT1RMSL3-LH | | BL-LPTS-TT1RMSL3-LH | | BL-LPTS-TT1RMSL3-RH | | BL-LPTS-TT1RMSL3-RH | |

B. TT hardware, power mount

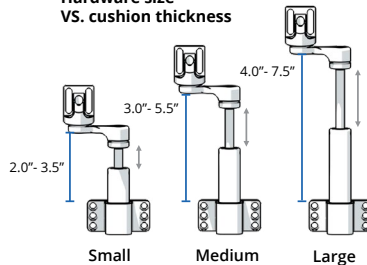
TT hardware
power mount - Fixed



TT hardware
power mount -
Removable



Hardware size
VS. cushion thickness



| Hardware size | Max cushion thickness clearance | Recommended cushion thickness |
|---------------|---------------------------------------|-------------------------------------|
| Small | 3.5" | 2.0"- 3.5" |
| Medium | 5.5" | 3.0"- 5.5" |
| Large | 7.5" | 4.0"- 7.5" |

| | | Size | MSRP | Left | | Extra left | | Right | | Extra right | |
|--------------------|--------|----------|------|----------------------|--|----------------------|--|----------------------|--|----------------------|--|
| Fixed | Small | \$211.00 | | BL-LPTS-TT1FXPWL1-LH | | BL-LPTS-TT1FXPWL1-LH | | BL-LPTS-TT1FXPWL1-RH | | BL-LPTS-TT1FXPWL1-RH | |
| | Medium | \$211.00 | | BL-LPTS-TT1FXPWL2-LH | | BL-LPTS-TT1FXPWL2-LH | | BL-LPTS-TT1FXPWL2-RH | | BL-LPTS-TT1FXPWL2-RH | |
| | Large | \$211.00 | | BL-LPTS-TT1FXPWL3-LH | | BL-LPTS-TT1FXPWL3-LH | | BL-LPTS-TT1FXPWL3-RH | | BL-LPTS-TT1FXPWL3-RH | |
| Removable E1028 | Small | \$324.00 | | BL-LPTS-TT1RMPWL1-LH | | BL-LPTS-TT1RMPWL1-LH | | BL-LPTS-TT1RMPWL1-RH | | BL-LPTS-TT1RMPWL1-RH | |
| | Medium | \$324.00 | | BL-LPTS-TT1RMPWL2-LH | | BL-LPTS-TT1RMPWL2-LH | | BL-LPTS-TT1RMPWL2-RH | | BL-LPTS-TT1RMPWL2-RH | |
| | Large | \$324.00 | | BL-LPTS-TT1RMPWL3-LH | | BL-LPTS-TT1RMPWL3-LH | | BL-LPTS-TT1RMPWL3-RH | | BL-LPTS-TT1RMPWL3-RH | |

TT hardware, power mount option

Note: If choosing the Power Mount Hardware, choose the appropriate power mount type below.

| Power mount | MSRP | Part number |
|-------------|------------|--------------|
| QUANTUM | add \$0.00 | LPTS-TT1-PW1 |
| PERMOBIL | add \$0.00 | LPTS-TT1-PW2 |
| QUICKIE | add \$0.00 | LPTS-TT1-PW3 |
| ROVI | add \$0.00 | LPTS-TT1-PW4 |
| AVID REHAB | add \$0.00 | LPTS-TT1-PW5 |

3.4 TT Long Extension Arm 4"

MSRP \$43.00/arm



| Left | Extra left | Right | Extra right |
|------------------|------------------|------------------|------------------|
| BL-LPTS-TT1LARM4 | BL-LPTS-TT1LARM4 | BL-LPTS-TT1LARM4 | BL-LPTS-TT1LARM4 |

4 BodiLink® Medial Knee/Thigh support hardware & pads

- You may make one selection per column.
- Choose a cover material in 4.2.
- Choose between wedge or oval in 4.1.
- Choose hardware size in 4.3.

4.1 Pad size & shape

HCPSC Coding: E0957 MSRP \$148.00

| Style | Size | Part number |
|-----------|---------------|----------------|
| Wedge | 2.5"W x 3.5"D | BL-MKTSP1-3W4D |
| | 3.5"W x 5"D | BL-MKTSP1-4W5D |
| | 4"W x 6"D | BL-MKTSP1-4W6D |
| Oval | 2.5"W x 3.5"D | BL-MKTSP2-3W4D |
| | 3.5"W x 5"D | BL-MKTSP2-4W5D |
| | 5"W x 6"D | BL-MKTSP2-5W6D |

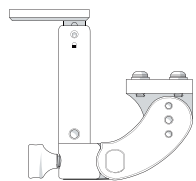
4.2 Pad cover material

| | |
|----------------------------|---|
| COMFORT-TEK | For skin protection & shear reduction. Not fluid resistant. |
| STRETCH-AIR | For fluid protection & an easily cleaned surface. |
| | For patient comfort & heat dissipation. |

| | |
|--|---------------------------------------|
| | GlideWear (MKTSP-GLIDE) (add \$15.00) |
| | COMFORT-TEK (MKTSP-COMFORT) |
| | STRETCH-AIR (MKTSP-STRETCH) |

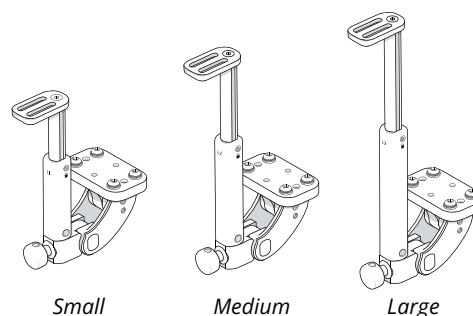
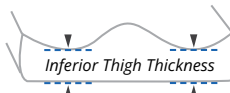
4.3 Medial Knee/Thigh support Swing Away hardware

HCPSC Coding: E1028 MSRP \$205.00



| Size | Part number |
|--------|------------------|
| Small | BL-MKTS-ST1SASL1 |
| Medium | BL-MKTS-ST1SASL2 |
| Large | BL-MKTS-ST1SASL3 |

*Swing Away Hardware only, not available in Fixed Hardware
 **MKTS Hardware must be mounted to Removable Solid Seat Pan in section 2.4
 ***If Leg Length Discrepancy is needed on Removable Solid Seat Pan, Offset Orientation must be selected



| Size | Recommended inferior thigh thickness |
|--------|--------------------------------------|
| Small | 1.00" - 3.00" |
| Medium | 2.00" - 5.00" |
| Large | 3.00" - 7.00" |

The following are trademarks and registered trademarks of Permobil Seating and Positioning: COMFORT-TEK® and STRETCH-AIR®. GlideWear™ is a trademark of MIPS.