

M2 ORDER FORM

permobil

PRICING IN CANADIAN DOLLARS

M2 shown with GlideWear™

M2 Zero Elevation



Company Name/ACCT #: _____

P.O. Number: _____

Requested By: _____

Phone: _____ Fax: _____

Email: _____

Ship To: _____

Client Reference: _____

For best results, do not fill out in your browser. Interactive form should be completed using Adobe Reader [after](#) saving to your local drive. Then email or print and fax to Customer Support at sales.ca@permobil.com or 1.877.636.8944.

1 SIZE, STYLE & COVER

STYLES

ZERO ELEVATION

ANTI-THRUST

| DEPTH | 24" | | | | | | | | 18 x 24 | 19 x 24 | 20 x 24 | 21 x 24 | 22 x 24 | 23 x 24 | 24 x 24 | | |
|-------|---------|---------|---------|---------|---------|---------|---------|---------|---------|---------|---------|---------|---------|---------|---------|---------|---------|
| | 23" | | | | | | | | 18 x 23 | 19 x 23 | 20 x 23 | 21 x 23 | 22 x 23 | 23 x 23 | 24 x 23 | | |
| | 22" | | | | | | 16 x 22 | 17 x 22 | 18 x 22 | 19 x 22 | 20 x 22 | 21 x 22 | 22 x 22 | 23 x 22 | 24 x 22 | | |
| | 21" | | | | | 15 x 21 | 16 x 21 | 17 x 21 | 18 x 21 | 19 x 21 | 20 x 21 | 21 x 21 | 22 x 21 | 23 x 21 | 24 x 21 | | |
| | 20" | | | | 14 x 20 | 15 x 20 | 16 x 20 | 17 x 20 | 18 x 20 | 19 x 20 | 20 x 20 | 21 x 20 | 22 x 20 | 23 x 20 | 24 x 20 | | |
| | 19" | | | 14 x 19 | 15 x 19 | 16 x 19 | 17 x 19 | 18 x 19 | 19 x 19 | 20 x 19 | 21 x 19 | 22 x 19 | 23 x 19 | 24 x 19 | | | |
| | 18" | | | 12 x 18 | 13 x 18 | 14 x 18 | 15 x 18 | 16 x 18 | 17 x 18 | 18 x 18 | 19 x 18 | 20 x 18 | 21 x 18 | 22 x 18 | 23 x 18 | 24 x 18 | |
| | 17" | | | 11 x 17 | 12 x 17 | 13 x 17 | 14 x 17 | 15 x 17 | 16 x 17 | 17 x 17 | 18 x 17 | 19 x 17 | 20 x 17 | 21 x 17 | 22 x 17 | 23 x 17 | 24 x 17 |
| | 16" | 10 x 16 | 11 x 16 | 12 x 16 | 13 x 16 | 14 x 16 | 15 x 16 | 16 x 16 | 17 x 16 | 18 x 16 | 19 x 16 | 20 x 16 | 21 x 16 | 22 x 16 | 23 x 16 | 24 x 16 | |
| | 15" | 10 x 15 | 11 x 15 | 12 x 15 | 13 x 15 | 14 x 15 | 15 x 15 | 16 x 15 | 17 x 15 | 18 x 15 | 19 x 15 | 20 x 15 | | | | | |
| 14" | 10 x 14 | 11 x 14 | 12 x 14 | 13 x 14 | 14 x 14 | 15 x 14 | 16 x 14 | 17 x 14 | 18 x 14 | 19 x 14 | | | | | | | |
| 13" | 10 x 13 | 11 x 13 | 12 x 13 | 13 x 13 | 14 x 13 | 15 x 13 | 16 x 13 | 17 x 13 | | | | | | | | | |
| 12" | 10 x 12 | 11 x 12 | 12 x 12 | 13 x 12 | 14 x 12 | 15 x 12 | 16 x 12 | 17 x 12 | | | | | | | | | |
| 11" | 10 x 11 | 11 x 11 | 12 x 11 | 13 x 11 | 14 x 11 | 15 x 11 | | | | | | | | | | | |
| 10" | 10 x 10 | 11 x 10 | 12 x 10 | 13 x 10 | 14 x 10 | 15 x 10 | | | | | | | | | | | |
| | 10" | 11" | 12" | 13" | 14" | 15" | 16" | 17" | 18" | 19" | 20" | 21" | 22" | 23" | 24" | | |
| | WIDTH | | | | | | | | | | | | | | | | |

PRICING

| CUSHION SIZE | COMFORT-TEK OR STRETCH-AIR | WITH GLIDEWEAR |
|----------------|----------------------------|----------------|
| Standard | \$552.00 | \$578.00 |
| Bariatric >20" | \$725.00 | \$751.00 |

M2 PART NUMBERS

| CUSHION STYLE | STRETCH-AIR | COMFORT-TEK |
|----------------|-------------------------|-------------------------|
| Zero Elevation | M2-S-WWDD | M2-F-WWDD |
| Anti-Thrust | M2-SA-WWDD | M2-FA-WWDD |
| | STRETCH-AIR + GLIDEWEAR | COMFORT-TEK + GLIDEWEAR |
| Zero Elevation | M2-SQ-WWDD | M2-FQ-WWDD |
| Anti-Thrust | M2-SQA-WWDD | M2-FQA-WWDD |

WWDD to be replaced with sizes from table; WW - width in inches & DD - depth in inches

YOUR ORDER PART

Please summarize your cushion style, size, and cover options here.

M2-

Example: M2-FQ-1816 for a M2 Zero Elevation cushion with a Comfort-Tek cover & added GlideWear.

COVER & LINER OPTIONS



COMFORT-TEK®

For fluid protection & an easily cleaned surface.



STRETCH-AIR®

For patient comfort & heat dissipation.



GLIDEWEAR™

Promotes healing & reduces risk of skin breakdown*

*A GlideWear® Shear Reduction Panel is incorporated into the cover under the most at-risk areas to allow for micro-movements without the deformation of tissue.
U.S. GLIDEWEAR® Patent No. 8,646,459



INCONTINENCE LINER

Liner provides extra incontinence protection for the cushion. Add at time of cushion purchase for only \$53.00.

(INCON-LINER)



RIGID INSERT

3/16" plastic rigidizing board. \$91.00.

(RID_W_D)

ACCESSORIES

EXTRA COMFORT-TEK OUTER COVER

Regular:

(M2--WWDD-CV)

One = \$125.00

Two = \$250.00

with GlideWear:

(+CC-GLIDEWEAR)

One = \$150.00

Two = \$300.00

EXTRA STRETCH-AIR OUTER COVER

Regular:

(M2--WWDD-CV)

One = \$125.00

Two = \$250.00

with GlideWear:

(+CC-GLIDEWEAR)

One = \$150.00

Two = \$300.00

EXTRA INCONTINENCE LINER

Off cushion:

(BINC-M2--WWDD-CV)

One = \$120.00

Two = \$240.00

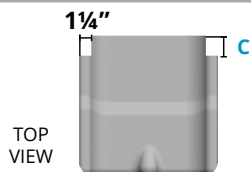
2 M2 ACCESSORIES

*All accessories are cosmetic changes to the cushion except for options in gray, which are add-on items.

2.1 GROWTH NOTCHES MSRP \$0.00

If growth notches are selected, a 1¼" wide cut will be taken from each side to allow the cushion to fit between the chair canes.

DEPTH OF NOTCHES

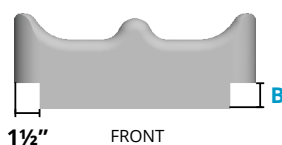


C = 1" D (GROWTH-NOTCH-1)

C = 2" D (GROWTH-NOTCH-2)

2.2 RAIL CUTS MSRP \$55.00

A standard 1 1/2" wide cut will be made and you decide how high the cut will need to be. All cuts run the entire depth of the cushion.



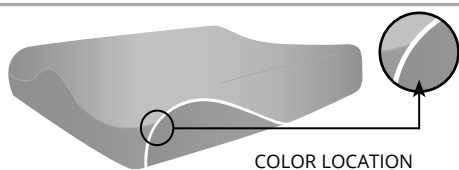
B = 1" Rail Cut (RAIL-CUT-1.0)

B = 1½" Rail Cut (RAIL-CUT-1.5)

B = 2" Rail Cut (RAIL-CUT-2.0)

2.3 COLOR - COMES STANDARD SILVER REFLECTIVE PIPING MSRP \$55.00

Accent colors can be applied to the cushion via colored piping. If no colors are selected, our standard silver reflective piping is used.



Red (RED)

Blue (BLUE)

Purple (PURPLE)

Green (GREEN)

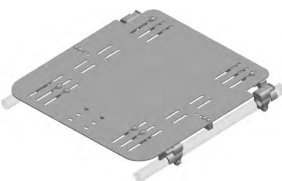
Pink (PINK)

Remove (REMOVE)

Orange (ORANGE)

2.4 REMOVABLE SOLID SEAT PAN & HARDWARE KIT MSRP \$657.00

The solid seat pan kit includes a slotted aluminum pan and attaching hardware to accommodate 7/8" or 1" tubing. The kit also comes with two different cross bars to accommodate various wheelchair frame types. This will fit both folding and non-folding seat rails. Lateral thigh support hardware can be easily attached.



Solid Seat Pan & Hardware Kit
(RSSP-N-HARD)

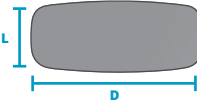
3 BODILINK® LATERAL PELVIC/THIGH SUPPORT HARDWARE & PADS

Please select sizes in the appropriate fabric & style charts below. Contact Customer Support for custom sizes that are not listed below at 800.265.9830.

3.1 PREMIUM PAD MSRP \$142.00/ea.

- You may make one selection per column (Left, Extra Left, Right, and Extra Right) in section 3.1 for Premium Pads, or 3.3 for Basic Pads.
- Make a pad cover fabric selection in 3.2 or 3.4.

*Length (L) refers to the actual size dimension of the support from top to bottom edge. Depth (D) refers to the actual size dimension from anterior to posterior edge.

| STYLE | SIZE | LEFT | EXTRA LEFT | RIGHT | EXTRA RIGHT |
|---|--------------|---------------------|---------------------|---------------------|---------------------|
|  | 3.5"L x 4"D | BL-LPTSP2Z-3L4D-LH | BL-LPTSP2Z-3L4D-LH | BL-LPTSP2Z-3L4D-RH | BL-LPTSP2Z-3L4D-RH |
| | 3.5"L x 8"D | BL-LPTSP2Z-3L8D-LH | BL-LPTSP2Z-3L8D-LH | BL-LPTSP2Z-3L8D-RH | BL-LPTSP2Z-3L8D-RH |
| | 3.5"L x 12"D | BL-LPTSP2Z-3L12D-LH | BL-LPTSP2Z-3L12D-LH | BL-LPTSP2Z-3L12D-RH | BL-LPTSP2Z-3L12D-RH |
| | 5.5"L x 6"D | BL-LPTSP2Z-5L6D-LH | BL-LPTSP2Z-5L6D-LH | BL-LPTSP2Z-5L6D-RH | BL-LPTSP2Z-5L6D-RH |

3.2 PREMIUM PAD COVER WITH FOAM INSERT



COMFORT-TEK
FOR FLUID PROTECTION & AN EASILY CLEANED SURFACE.



STRETCH-AIR
FOR PATIENT COMFORT & HEAT DISSIPATION.

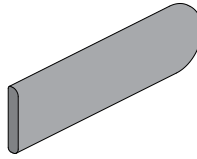


FOR SKIN PROTECTION & SHEAR REDUCTION.
NOT FLUID RESISTANT.

| COVER OPTIONS | MSRP | LEFT | EXTRA LEFT | RIGHT | EXTRA RIGHT |
|---------------|-------------|--------------------|--------------------|--------------------|--------------------|
| COMFORT-TEK | \$0.00/ea. | LPTS-P2-COMFORT-FM | LPTS-P2-COMFORT-FM | LPTS-P2-COMFORT-FM | LPTS-P2-COMFORT-FM |
| STRETCH-AIR | \$0.00/ea. | LPTS-P2-STRETCH-FM | LPTS-P2-STRETCH-FM | LPTS-P2-STRETCH-FM | LPTS-P2-STRETCH-FM |
| GLIDEWEAR® | \$34.00/ea. | LPTS-P2-GLIDE-FM | LPTS-P2-GLIDE-FM | LPTS-P2-GLIDE-FM | LPTS-P2-GLIDE-FM |

3.3 BASIC PAD MSRP \$132.00/ea.

*Length (L) refers to the actual size dimension of the support from top to bottom edge. Depth (D) refers to the actual size dimension from anterior to posterior edge.

| STYLE | SIZE | LEFT | EXTRA LEFT | RIGHT | EXTRA RIGHT |
|---|-------------|---------------------|---------------------|---------------------|---------------------|
|  | 3"L x 4"D | BL-LPTSP1Z-3L4D-LH | BL-LPTSP1Z-3L4D-LH | BL-LPTSP1Z-3L4D-RH | BL-LPTSP1Z-3L4D-RH |
| | 3"L x 5"D | BL-LPTSP1Z-3L5D-LH | BL-LPTSP1Z-3L5D-LH | BL-LPTSP1Z-3L5D-RH | BL-LPTSP1Z-3L5D-RH |
| | 4"L x 4"D | BL-LPTSP1Z-4L4D-LH | BL-LPTSP1Z-4L4D-LH | BL-LPTSP1Z-4L4D-RH | BL-LPTSP1Z-4L4D-RH |
| | 4"L x 6"D | BL-LPTSP1Z-4L6D-LH | BL-LPTSP1Z-4L6D-LH | BL-LPTSP1Z-4L6D-RH | BL-LPTSP1Z-4L6D-RH |
| | 4"L x 8"D | BL-LPTSP1Z-4L8D-LH | BL-LPTSP1Z-4L8D-LH | BL-LPTSP1Z-4L8D-RH | BL-LPTSP1Z-4L8D-RH |
| | 4"L x 10"D | BL-LPTSP1Z-4L10D-LH | BL-LPTSP1Z-4L10D-LH | BL-LPTSP1Z-4L10D-RH | BL-LPTSP1Z-4L10D-RH |
| | 4"L x 12" D | BL-LPTSP1Z-4L12D-LH | BL-LPTSP1Z-4L12D-LH | BL-LPTSP1Z-4L12D-RH | BL-LPTSP1Z-4L12D-RH |
| | 4"L x 14" D | BL-LPTSP1Z-4L14D-LH | BL-LPTSP1Z-4L14D-LH | BL-LPTSP1Z-4L14D-RH | BL-LPTSP1Z-4L14D-RH |
| | 4"L x 16" D | BL-LPTSP1Z-4L16D-LH | BL-LPTSP1Z-4L16D-LH | BL-LPTSP1Z-4L16D-RH | BL-LPTSP1Z-4L16D-RH |
| | 5"L x 7" D | BL-LPTSP1Z-5L7D-LH | BL-LPTSP1Z-5L7D-LH | BL-LPTSP1Z-5L7D-RH | BL-LPTSP1Z-5L7D-RH |

3.4 BASIC PAD COVER



COMFORT-TEK
FOR FLUID PROTECTION & AN EASILY CLEANED SURFACE.



STRETCH-AIR
FOR PATIENT COMFORT & HEAT DISSIPATION.



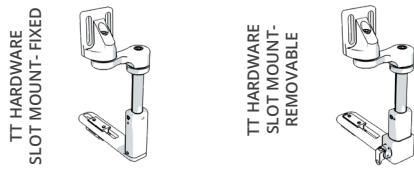
FOR SKIN PROTECTION & SHEAR REDUCTION.
NOT FLUID RESISTANT.

| COVER OPTIONS | MSRP | LEFT | EXTRA LEFT | RIGHT | EXTRA RIGHT |
|---------------|-------------|-----------------|-----------------|-----------------|-----------------|
| COMFORT-TEK | \$0.00/ea. | LPTS-P1-COMFORT | LPTS-P1-COMFORT | LPTS-P1-COMFORT | LPTS-P1-COMFORT |
| STRETCH-AIR | \$0.00/ea. | LPTS-P1-STRETCH | LPTS-P1-STRETCH | LPTS-P1-STRETCH | LPTS-P1-STRETCH |
| GLIDEWEAR® | \$34.00/ea. | LPTS-P1-GLIDE | LPTS-P1-GLIDE | LPTS-P1-GLIDE | LPTS-P1-GLIDE |

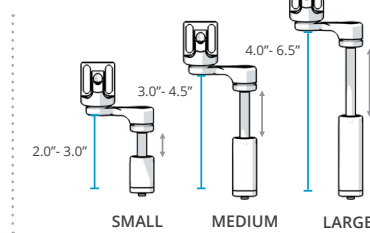
BODILINK® LATERAL PELVIC/THIGH SUPPORT HARDWARE

- You may make one selection per column (Left, Extra Left, Right, and Extra Right) in section 3.5 from group A, B, -OR- C.
- TT long extension arms will only work with TT style hardware.
- GT hardware extra links will only work with GT style hardware.

A. TT HARDWARE, SLOT MOUNT



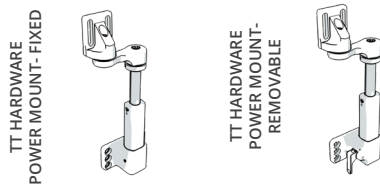
HARDWARE SIZE
VS. CUSHION THICKNESS



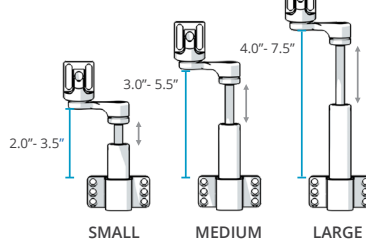
| HARDWARE SIZE | MAX CUSHION THICKNESS CLEARANCE | RECOMMENDED CUSHION THICKNESS |
|---------------|---------------------------------|-------------------------------|
| SMALL | 3.0" | 2.0"- 3.0" |
| MEDIUM | 4.5" | 3.0"- 4.5" |
| LARGE | 6.5" | 4.0"- 6.5" |

| | SIZE | MSRP | | | | |
|-----------------|--------|--------------|---------------------|---------------------|---------------------|---------------------|
| | | | LEFT | EXTRA LEFT | RIGHT | EXTRA RIGHT |
| FIXED | SMALL | \$207.00/ea. | BL-LPTS-TT1FXSL1-LH | BL-LPTS-TT1FXSL1-LH | BL-LPTS-TT1FXSL1-RH | BL-LPTS-TT1FXSL1-RH |
| | MEDIUM | \$207.00/ea. | BL-LPTS-TT1FXSL2-LH | BL-LPTS-TT1FXSL2-LH | BL-LPTS-TT1FXSL2-RH | BL-LPTS-TT1FXSL2-RH |
| | LARGE | \$207.00/ea. | BL-LPTS-TT1FXSL3-LH | BL-LPTS-TT1FXSL3-LH | BL-LPTS-TT1FXSL3-RH | BL-LPTS-TT1FXSL3-RH |
| OR REMOVABLE | SMALL | \$296.00/ea. | BL-LPTS-TT1RMSL1-LH | BL-LPTS-TT1RMSL1-LH | BL-LPTS-TT1RMSL1-RH | BL-LPTS-TT1RMSL1-RH |
| | MEDIUM | \$296.00/ea. | BL-LPTS-TT1RMSL2-LH | BL-LPTS-TT1RMSL2-LH | BL-LPTS-TT1RMSL2-RH | BL-LPTS-TT1RMSL2-RH |
| | LARGE | \$296.00/ea. | BL-LPTS-TT1RMSL3-LH | BL-LPTS-TT1RMSL3-LH | BL-LPTS-TT1RMSL3-RH | BL-LPTS-TT1RMSL3-RH |

B. TT HARDWARE, POWER MOUNT



HARDWARE SIZE
VS. CUSHION THICKNESS



| HARDWARE SIZE | MAX CUSHION THICKNESS CLEARANCE | RECOMMENDED CUSHION THICKNESS |
|---------------|---------------------------------|-------------------------------|
| SMALL | 3.5" | 2.0"- 3.5" |
| MEDIUM | 5.5" | 3.0"- 5.5" |
| LARGE | 7.5" | 4.0"- 7.5" |

| | SIZE | MSRP | | | | |
|-----------------|--------|--------------|----------------------|----------------------|----------------------|----------------------|
| | | | LEFT | EXTRA LEFT | RIGHT | EXTRA RIGHT |
| FIXED | SMALL | \$268.00/ea. | BL-LPTS-TT1FXPWL1-LH | BL-LPTS-TT1FXPWL1-LH | BL-LPTS-TT1FXPWL1-RH | BL-LPTS-TT1FXPWL1-RH |
| | MEDIUM | \$268.00/ea. | BL-LPTS-TT1FXPWL2-LH | BL-LPTS-TT1FXPWL2-LH | BL-LPTS-TT1FXPWL2-RH | BL-LPTS-TT1FXPWL2-RH |
| | LARGE | \$268.00/ea. | BL-LPTS-TT1FXPWL3-LH | BL-LPTS-TT1FXPWL3-LH | BL-LPTS-TT1FXPWL3-RH | BL-LPTS-TT1FXPWL3-RH |
| OR REMOVABLE | SMALL | \$350.00/ea. | BL-LPTS-TT1RMPWL1-LH | BL-LPTS-TT1RMPWL1-LH | BL-LPTS-TT1RMPWL1-RH | BL-LPTS-TT1RMPWL1-RH |
| | MEDIUM | \$350.00/ea. | BL-LPTS-TT1RMPWL2-LH | BL-LPTS-TT1RMPWL2-LH | BL-LPTS-TT1RMPWL2-RH | BL-LPTS-TT1RMPWL2-RH |
| | LARGE | \$350.00/ea. | BL-LPTS-TT1RMPWL3-LH | BL-LPTS-TT1RMPWL3-LH | BL-LPTS-TT1RMPWL3-RH | BL-LPTS-TT1RMPWL3-RH |

TT HARDWARE, POWER MOUNT OPTION

NOTE: If choosing the Power Mount Hardware, choose the appropriate power mount type below.

| POWER MOUNT | MSRP | PART NUMBER |
|-------------|------------|--------------|
| QUANTUM | add \$0.00 | LPTS-TT1-PW1 |
| PERMOBIL | add \$0.00 | LPTS-TT1-PW2 |
| QUICKIE | add \$0.00 | LPTS-TT1-PW3 |
| ROVI | add \$0.00 | LPTS-TT1-PW4 |
| AVID REHAB | add \$0.00 | LPTS-TT1-PW5 |

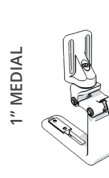
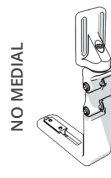
TT LONG EXTENSION ARM 4"

MSRP \$55.00/arm



| LEFT | EXTRA LEFT | RIGHT | EXTRA RIGHT |
|------------------|------------------|------------------|------------------|
| BL-LPTS-TT1LARM4 | BL-LPTS-TT1LARM4 | BL-LPTS-TT1LARM4 | BL-LPTS-TT1LARM4 |

C. GT HARDWARE, ONLY SLOT MOUNT

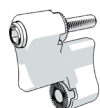


| HARDWARE | MAX CUSHION THICKNESS CLEARANCE | RECOMMENDED CUSHION THICKNESS |
|-----------|---------------------------------|-------------------------------|
| NO MEDIAL | *5.0" | 2.5"- 5.0" |
| 1" MEDIAL | *4.0" | 2.25"- 4.0" |

*If you need to increase the height or medial reach, add additional links below.

| SIZE | MSRP | LEFT | EXTRA LEFT | RIGHT | EXTRA RIGHT |
|-----------|--------------|-------------------|-------------------|-------------------|-------------------|
| FIXED | \$207.00/ea. | BL-LPTS-GT2FXS-LH | BL-LPTS-GT2FXS-LH | BL-LPTS-GT2FXS-RH | BL-LPTS-GT2FXS-RH |
| REMOVABLE | \$247.00/ea. | BL-LPTS-GT2RMS-LH | BL-LPTS-GT2RMS-LH | BL-LPTS-GT2RMS-RH | BL-LPTS-GT2RMS-RH |

ADDITIONAL GT OPTIONS



| GT ADDITIONAL HARDWARE LINKS | LEFT | EXTRA LEFT | RIGHT | EXTRA RIGHT |
|--|-----------------|-----------------|-----------------|-----------------|
| MSRP \$55.00/link (2 Additional 1.25" Links Allowed Per Hardware Ordered) | BL-LPTS-GT2LINK | BL-LPTS-GT2LINK | BL-LPTS-GT2LINK | BL-LPTS-GT2LINK |
| | BL-LPTS-GT2LINK | BL-LPTS-GT2LINK | BL-LPTS-GT2LINK | BL-LPTS-GT2LINK |

4 BODILINK® MEDIAL KNEE/THIGH SUPPORT HARDWARE & PADS

4.1 PAD SIZE & SHAPE

MSRP \$193.00/ea.

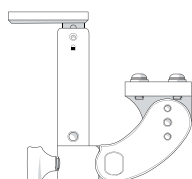
| STYLE | SIZE | PART NUMBER |
|------------------|---------------|----------------|
| WEDGE | 2.5"W x 3.5"D | BL-MKTSP1-3W4D |
| | 3.5"W x 5"D | BL-MKTSP1-4W5D |
| | 4"W x 6"D | BL-MKTSP1-4W6D |
| OVAL | 2.5"W x 3.5"D | BL-MKTSP2-3W4D |
| | 3.5"W x 5"D | BL-MKTSP2-4W5D |
| | 5"W x 6"D | BL-MKTSP2-5W6D |

4.2 PAD COVER MATERIAL

| | |
|--|--|
| COMFORT-TEK STRETCH-AIR | <p>FOR SKIN PROTECTION & SHEAR REDUCTION. NOT FLUID RESISTANT.</p> <p>FOR FLUID PROTECTION & AN EASILY CLEANED SURFACE.</p> <p>FOR PATIENT COMFORT & HEAT DISSIPATION.</p> |
| | GlideWear™ (MKTSP-GLIDE) (add \$34.00) |
| | COMFORT-TEK (MKTSP-COMFORT) |
| | STRETCH-AIR (MKTSP-STRETCH) |

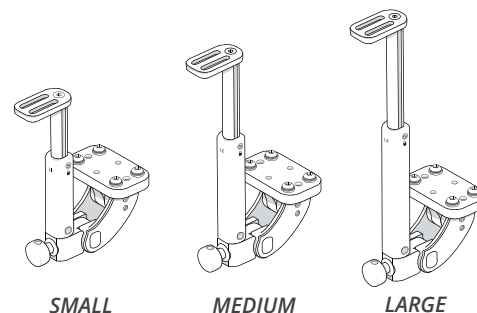
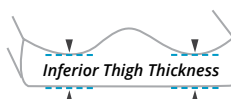
4.3 MEDIAL KNEE/THIGH SUPPORT SWING-AWAY HARDWARE

MSRP \$266.00/ea.



| SIZE | PART NUMBER |
|--------|------------------|
| SMALL | BL-MKTS-ST1SASL1 |
| MEDIUM | BL-MKTS-ST1SASL2 |
| LARGE | BL-MKTS-ST1SASL3 |

*Swing-Away Hardware only, not available in Fixed Hardware
 **MKTS Hardware must be mounted to Removable Solid Seat Pan in section 2.4
 ***If Leg Length Discrepancy is needed on Removable Solid Seat Pan, Offset Orientation must be selected



| SIZE | RECOMMENDED INFERIOR THIGH THICKNESS |
|--------|--------------------------------------|
| Small | 1.00"- 3.00" |
| Medium | 2.00"- 5.00" |
| Large | 3.00"- 7.00" |