

Titanium adjustable wheelchairs

TiLite TRA | TiLite ZRA



permobil

TiLite TRA

Our most advanced titanium adjustable chair, the TRA's dual-tube frame minimises weight while maximising performance.

The geometry of its titanium frame stiffens the wheelchair, transferring more of your push stroke directly to the ground resulting in greater stamina and a more effortless ride.



TiLite ZRA

Distinguished by a clean, minimal look, the mono-tube frame's 1.25" tubing gives the ZRA strength and durability.

In a class of its own, the ZRA has a lightweight and fully adjustable titanium frame. The minimal design results in excellent transportability and easy placement on a car seat.



Tattoo options

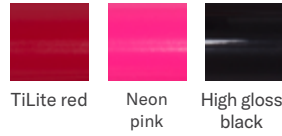
- 1 Mosaic
- 2 Flower garden
- 3 Need for speed



1 2 3

Frame colours

High gloss paint



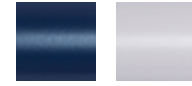
TiLite red Neon pink High gloss black

Metallic paint



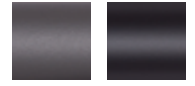
Tangerine metallic Acid green metallic Ocean blue metallic

Pearlescent paint



Midnight blue pearl White pearl

Matte paint



Titanium grey Black lava

Candy paint



Ruby red Azure blue Electric plum

Matte textured paint



Flame orange OD green Hyper blue

Natural Titanium



Satin Polished (CMD 87)

Component colours

Anodised



Red Orange Blue Purple Green Gold Black

Specifications

TiLite TRA

Frame features	Titanium Dual-Tube Rigid, TiFit, Full adjustability
Total chair width*	23"
Seat width	12" – 20"
Seat depth	12" – 20"
Front seat height	15" – 21"
Rear seat height	13" – 21"
Front frame angle	70°, 75°, 80°, 85°, or 90°
Camber	0°, 2°, 4°, 6°, or 8°
Centre of gravity adjustment	5"

Front seat width (seat taper)	0", 1", 2"
Folding seat back	Adj. height 9.5" – 22" Adj. angle 80° – 101°
Ergonomic seat	6", 7", 8"
Transit options	Q-Straint lock down approved
Transport weight*	5 kg
Weight limit	120 kg Standard 159 kg Heavy duty
Warranty	Seven years on frame One year on TiLite components

TiLite ZRA

Frame features	Titanium Mono-Tube Rigid, TiFit, Full adjustability
Total chair width*	23"
Seat width	10" – 20"
Seat depth	10" – 20"
Front seat height	16" – 21"
Rear seat height	12.5" – 21"
Front frame angle	70°, 75°, 80°, 85°, or 90°
Camber	0°, 2°, 4°, 6°, or 8°
Centre of gravity adjustment	6"

Front seat width (seat taper)	0", 1.5"
Folding seat back	Adj. height 9.5" – 22" Adj. angle 80° – 101°
Ergonomic seat	6", 7", 8"
Transit options	Transit tie-down
Transport weight*	4.8 kg
Weight limit	120 kg Standard 136 kg Heavy duty
Warranty	Seven years on frame One year on TiLite components

* Weights and widths based on 16" x 16" chair with 0° camber, minimum rear wheel spacing and all standard features. Rear wheels are not included in transport weight. For reference, a pair of standard 24" rear wheels weighs 3.3 kg.